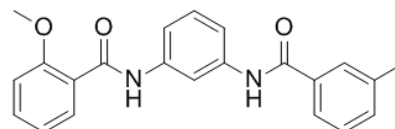


Product Name : ML365
Cat. No. : PC-42995
CAS No. : 947914-18-3
Molecular Formula : C₂₂H₂₀N₂O₃
Molecular Weight : 360.4058
Target : Potassium Channel
Solubility : 10 mM in DMSO



Biological Activity

ML365 is a potent and selective inhibitor of **KCNK3/TASK1** potassium channel, blocks TASK1 channels in both the thallium influx fluorescent assay (IC₅₀=4 nM) and an automated electrophysiology assay (IC₅₀=16 nM).

ML365 displays 98-fold selectivity over TASK1 (KCNK9), >7,500-fold over Kir2.1, KCNQ2 and hERG in thallium influx fluorescent assay.

ML365 is a useful pharmacological probe for in vitro studies of TASK1 function.

References

Zou B, et al. Probe Reports from the NIH Molecular Libraries Program [Internet].

Skarsfeldt MA, et al. Pflugers Arch. 2016 Apr;468(4):643-54.

Caution: Product has not been fully validated for medical applications. Lab Use Only!

E-mail: tech@probechem.com